



Uriarte Enclosures Group
spain - poland - portugal - equatorial guinea - uk



URIARTE SAFYBOX

www.safybox.com
www.safybox.com



Safybox ART



IP-43

IP-55

IK-10

Non-metallic enclosures made of fiberglass - reinforced polyester 7035
They are exceptionally durable, corrosion resistant can withstand abuse
& exposure to chemicals, water and extreme conditions



Who we are?

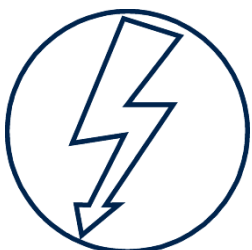
Uriarte SafyBox manufactures Non-Metallic GRP/FRP/SMC Enclosures:

Boxes and Cabinets made of glass reinforced polyester, aiming to give the best protective space in the market to any equipment for the following applications:

Electricity, Photovoltaic, Telecom, Gas, Water, Electrical Vehicle, Railways, etc

We also manufacture the complete electrical assembly inside, according your most exigent requirements, customizing every aspect on the enclosure like: modularity, mechanization, logo laser printing, colours, equipment installation, locking systems and other accessories

Our products can be found in more than 65 countries in the 5 continents and consequently are certified worldwide by external laboratories and authorities



What we do?

In our 3 production facilities: Spain, Portugal and Poland, we have a production capacity of 10.000 enclosures per day moulding thermosetting with 35 pressing machines (80 to 1.000 tons.), injecting thermoplastics with 24 machines (35 to 2.000 tons.), 3D robots, custom logos machine, CNC, robotized gasket system, etc

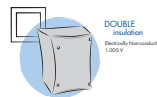
Safety by Design since 1970 and still innovating in the latest technologies, products and communication tics.

Check us via Internet :



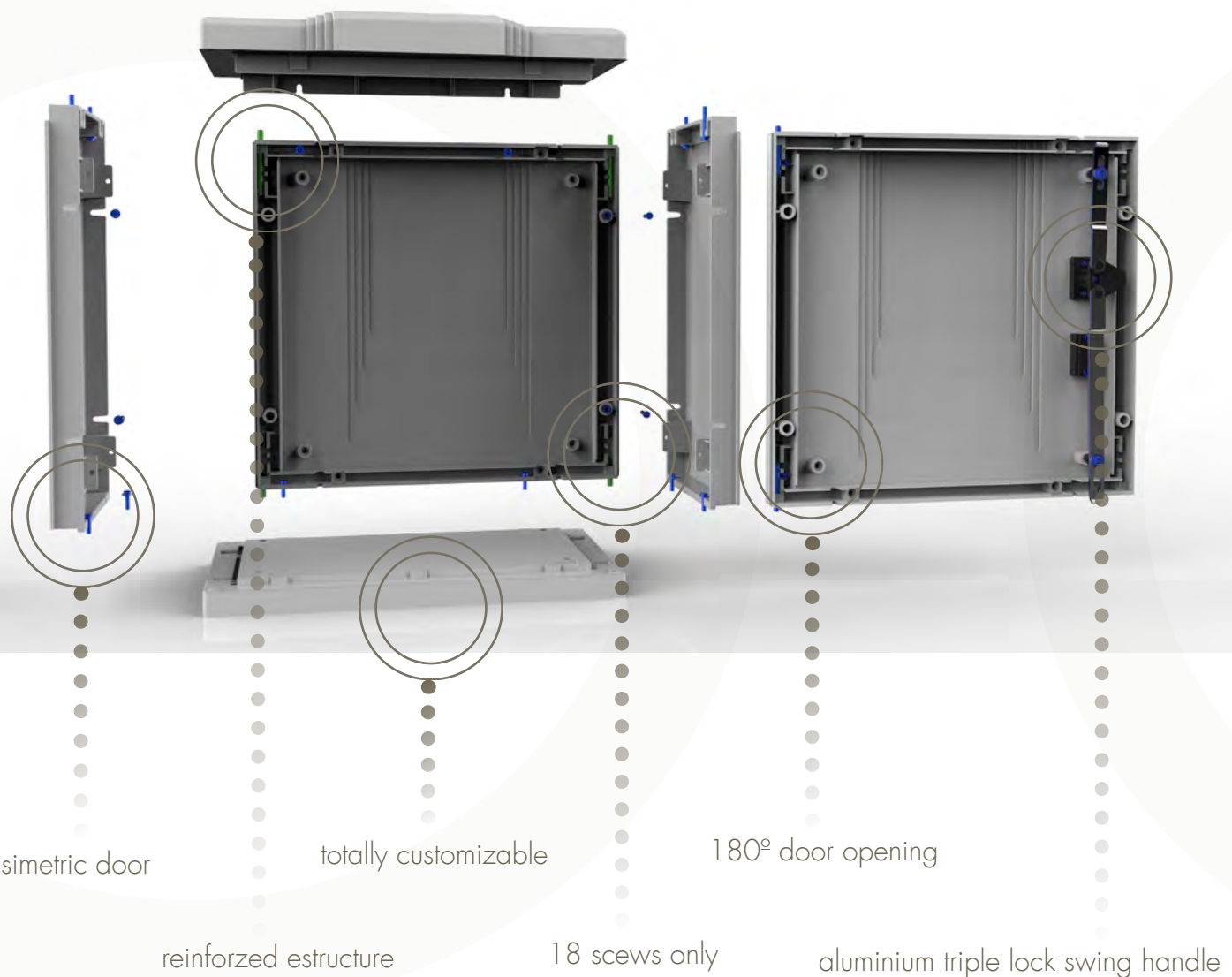
But above all,...our TEAM: Always happy to serve you in a efficient and unique way

Our polyester GRP RAL 7035 colour advantages and characteristics are :



modular cabinets

Outstanding design which makes the enclosure the most suitable for urban areas



The advanced design and thickness gives the enclosure a maximum strength against impacts and vandalism while avoiding any deformations and bows

The special pattern on the door and the back gives the enclosure and outstanding aesthetical design which also provides a reinforced structure to the whole enclosure

URIARTE SAFYBOX

www.safybox.com
www.safybox.com



outdoor cabinets



Fire retardant



Electromagnetic compatibility



Extreme weather conditions
UV resistant

URIARTE SAFYBOX

www.safybox.com
www.safybox.com



Get rid of labels that can be lost or faded!

Eliminate costly document holder, we will mark the wiring diagram directly in your enclosure!

Our laser printing system allows you to print:

Your Company Logo or Corporate Image

Your QR/Bidi code

.....THINK OUT OF THE BOX & GO BEYOND

YOUR IMAGINATION.....



URIARTE SAFYBOX

www.safybox.com
www.safybox.com



custom punching



We customize your enclosure on our fully automated 3D machine tool sections, been able to achieve the most complex drilling and machining on any of the enclosure sides,

back and door/cover

Our enclosure customized solutions are panel builder friendly, ready for direct assembling and avoiding manual machining and cut outs, most of the times inaccurate and inefficient



In addition, due to our production structure, lead times on customized enclosures are similar to standard enclosures in most of the cases and on top of this there are no minimum order requirements, even a 1 off prototype unit can be ordered for customer approval

Your project ready, quick, convenient, fully customized and budget driven



standard IP43 cabinets

Including : Enclosure with door and a three point triangular lock with swing handle and a padlock facility

CODE	DIMENSION	DESCRIPTION	PACKING	WEIGHT
ART-55	500x500x300	OUTDOOR FLOOR CABINET IP43 WITH ROOF	1	13,60
ART-57	500x750x300	OUTDOOR FLOOR CABINET IP43 WITH ROOF	1	17,00
ART-75	750x500x300	OUTDOOR FLOOR CABINET IP43 WITH ROOF	1	17,00
ART-77	750x750x300	OUTDOOR FLOOR CABINET IP43 WITH ROOF	1	22,00
ART-105	1000X500X300	OUTDOOR FLOOR CABINET IP43 WITH ROOF	1	19,00
ART-107	1000x750x300	OUTDOOR FLOOR CABINET IP43 WITH ROOF	1	27,00



gasket IP-55 cabinets

Including : Enclosure with door and a three point triangular lock with swing handle and a padlock facility, special door kit gasket up to IP-55

CODE	DIMENSION	DESCRIPTION	PACKING	WEIGHT
ART-55-IP55	500x500x300	OUTDOOR FLOOR CABINET IP55 WITH ROOF	1	13,60
ART-57-IP55	500x750x300	OUTDOOR FLOOR CABINET IP55 WITH ROOF	1	17,00
ART-75-IP55	750x500x300	OUTDOOR FLOOR CABINET IP55 WITH ROOF	1	17,00
ART-77-IP55	750x750x300	OUTDOOR FLOOR CABINET IP55 WITH ROOF	1	22,00
ART-105-IP55	1000X500X300	OUTDOOR FLOOR CABINET IP55 WITH ROOF	1	19,00
ART-107-IP55	1000x750x300	OUTDOOR FLOOR CABINET IP55 WITH ROOF	1	27,00



metal base plate

Including : metal base plate 2mm
 Not included screws m6x10

CODE	DIMENSION	DESCRIPTION		PACKING	WEIGHT
PMM-55	400x400	METALLIC BASE PLATE		10	0,38
PMM-57	400x650	METALLIC BASE PLATE		10	0,59
PMM-75	650x400	METALLIC BASE PLATE		10	0,87
PMM-77	650x650	METALLIC BASE PLATE		10	1,09
PMM-105	900x400	METALLIC BASE PLATE		5	1,30
PMM-107	900x650	METALLIC BASE PLATE		5	1,75



Galvanized steel plate, ready to fix inside the ART cabinet

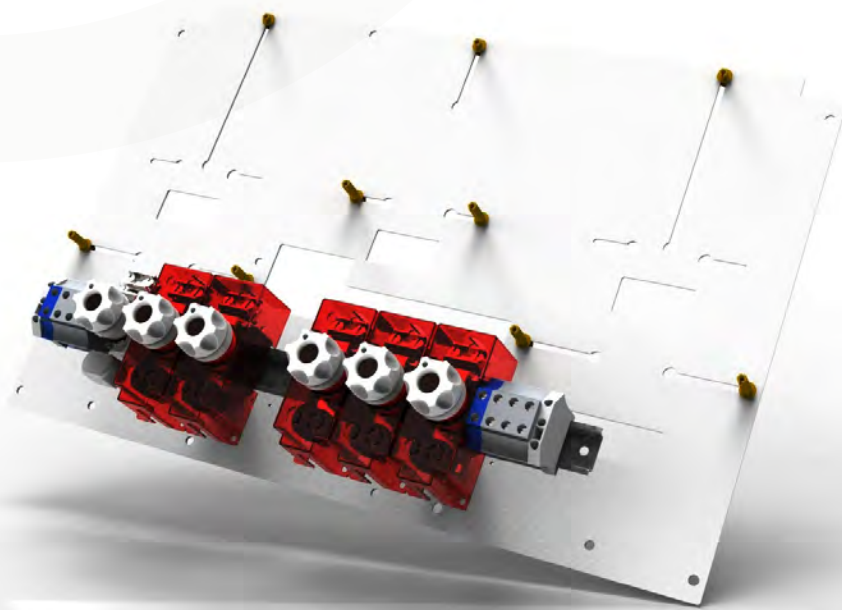
polyester base plate

Including : polyester base plate 4mm, we can offer up to 10mm under demand

Not included screws m6x10

CODE	DIMENSION	DESCRIPTION		PACKING	WEIGHT
PMP-55	400x400	POLYESTER BASE PLATE		10	0,38
PMP-57	400x650	POLYESTER BASE PLATE		10	0,59
PMP-75	650x400	POLYESTER BASE PLATE		10	0,87
PMP-77	650x650	POLYESTER BASE PLATE		10	1,09
PMP-105	900x400	POLYESTER BASE PLATE		5	1,30
PMP-107	900x650	POLYESTER BASE PLATE		5	1,75

Base plates customized under demand (meter screws, din rails, raisers, nuts, fuseholders, terminal blocks,cable...



underground pedestal

Including : polyester socle for art, mounted or in kit, screws M10

Optional : we can supply with locking system

CODE	DIMENSION	DESCRIPTION		PACKING	WEIGHT
F0-500	500x500x300	POLYESTER PEDESTAL 500high		1	7,90
F0-750	500x750x300	POLYESTER PEDESTAL 500high		1	11,20
F1-500	750x500x300	POLYESTER PEDESTAL 750high		1	11,20
F1-750	750x750x300	POLYESTER PEDESTAL 750high		1	14,50
F2-500	1000x500x300	POLYESTER PEDESTAL 1000high		1	14,70
F2-750	1000x750x300	POLYESTER PEDESTAL 1000high		1	17,20

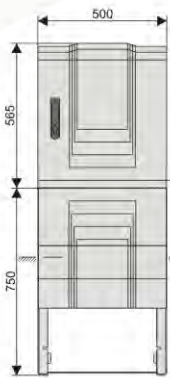


Optional : key lock 1333 for ART socle
all kind of locks under demand



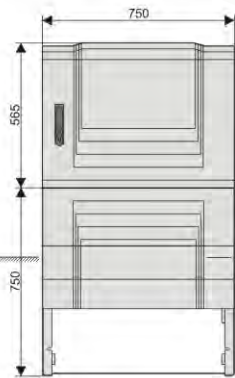
underground pedestal

ART-55



F1-500

ART-57



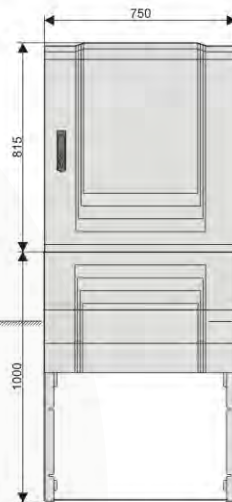
F1-750

ART-75



F2-500

ART-77



F2-750

ART-107



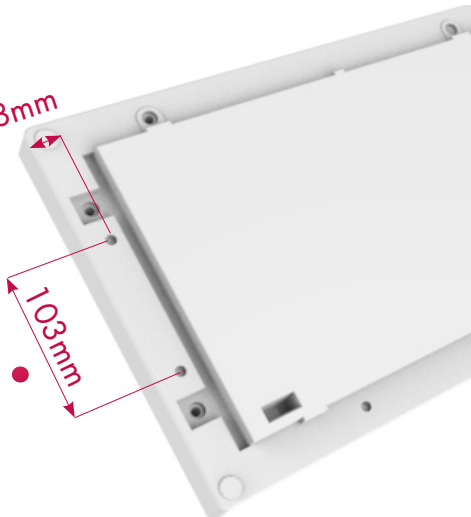
F2-750



Before fixing you must drill the base of the cabinet according this tech drawing, 2 holes of M10, then pass throught the hole the screws we suport with the pack.

18mm

103mm



pole fixing system

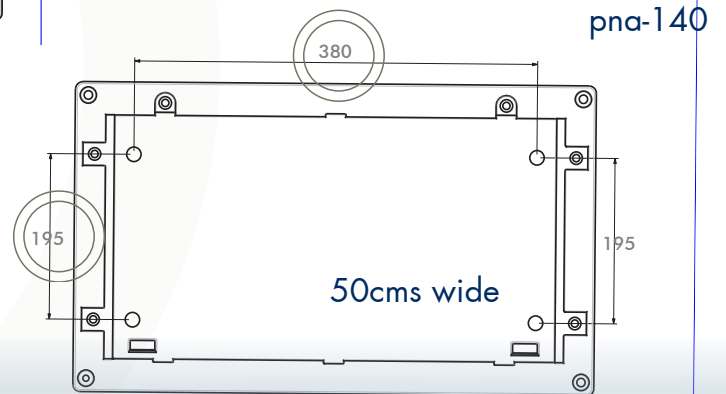
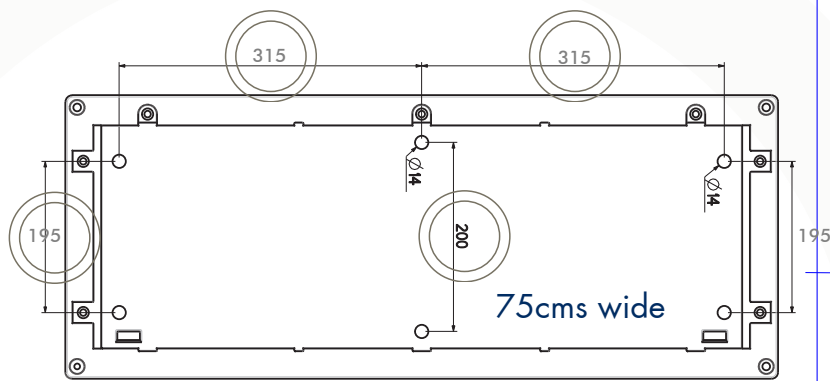


Metal frame for fixing to a concrete pole, it is necessary to modify and install special inserts back to the cabinet

bas-art



concrete fixing system

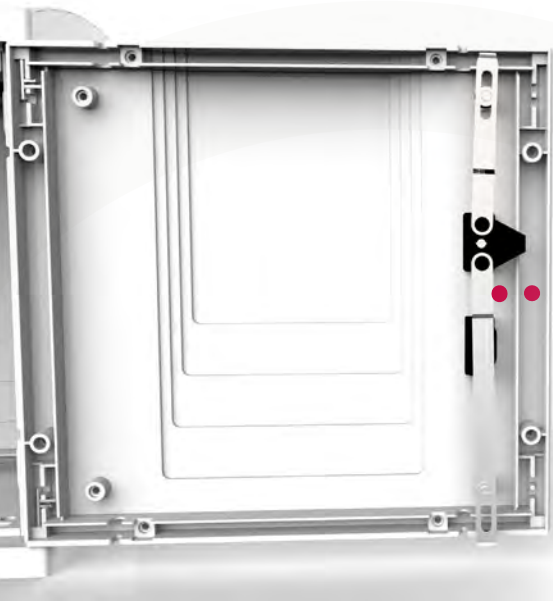


URIARTE SAFYBOX

www.safybox.com
www.safybox.com



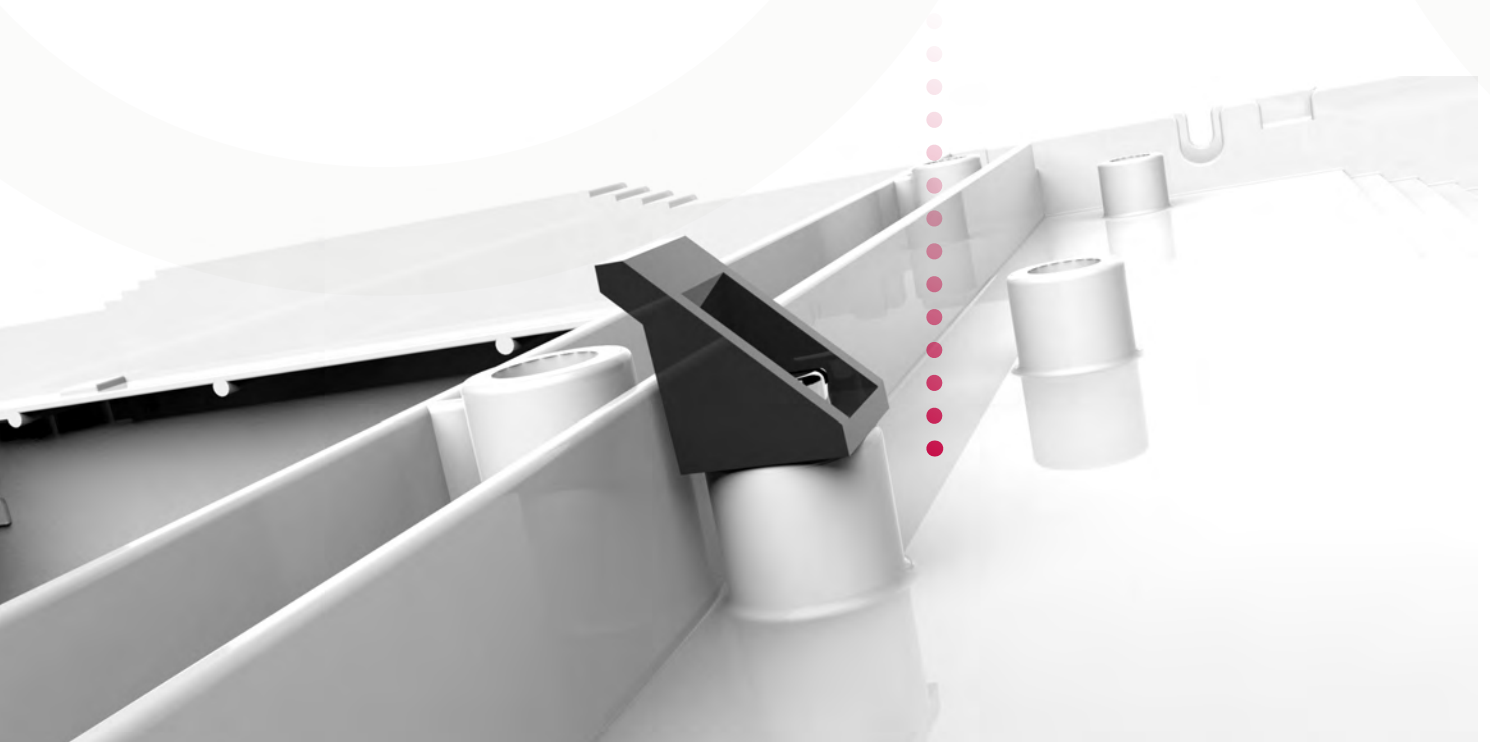
triple lock system



The locking system is critical in a cabinet, that is why we use aluminium non corrosive vertical bars

As the cabinet is simetic, we can install the lock in left or right position, just let us know when ordering

Antybow system : we avoid 3rd hige with our patented antybow system, it functions like a lip when closing the cabinet, then avoid bending parts in the door and prevent IP



URIARTE SAFYBOX

www.safybox.com
www.safybox.com

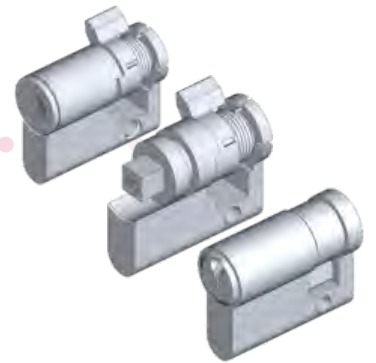


180° door opening



Triple lock locking system, simple to change european standard cylinders.

As a standard Triangle lock 11mm side



180° door opening.

Under demand we can manufacture double door opposite cabinets

As a standard Triangle lock
11mm side



URIARTE SAFYBOX

www.safybox.com
www.safybox.com



fixing modular system

vertical



Safybox-ART range of enclosures is the most suitable for all urban areas. Advanced design to provide the enclosure with maximum strength against impacts and vandalism while keeping a superb aesthetical look

Suitable for electrical, water, gas and telecom applications

Under the same aesthetic line, it can be combined together with Safybox-APM and CPM

horizontal



Reach the sky fixing in vertical position, available special horizontal fixation, send us your requirements and we will create under demand

accessories

CODE	DIMENSION	DESCRIPTION		PACKING	WEIGHT
CML-12T-MG		TRIPLE LOCK HANDLE KEY		1	0,32
CDB-10T-MG		TRIPLE LOCK HANDLE DOUBLE-BAR		1	0,32
CTR-11T-MG		TRIPLE LOCK HANDLE TRIANGLE		1	0,32
CCU-08T-MG		TRIPLE LOCK HANDLE SQUARE		1	0,32
PNA-140		FLOOR SYSTEM FI- XING (1 un)		1	0,20
SDP-300-ART		RAISED SUPPORT (6 UNITS)		1	0,18
BO-OF-ART		BRACKETS (4 UNITS)		1	0,32

RAISED SUPPORT (6 UNITS)

